

## Triple jet protection for industrial freezers



TRIOJET air curtain system is specially designed for freezers with large temperature differences. Ice, snow and fog are reduced, decreasing the risk of accidents while increasing energy savings and correct preservation of frozen products.

## AIR CURTAINS FOR COLD STORES



[www.airtechnics.com](http://www.airtechnics.com)



NOFCAT06044 - R1

Complete range of air curtains for cold room and freezer doors. The most effective solution to maintain the internal temperature, reduce cold loss, prevent condensation and ice formation.





# BENEFITS OF INSTALLING AND AIR CURTAIN

## Savings



Energy savings of up to 80% due to the reduction of cold losses and hot air infiltrations.



Reduces defrosting cycles and prolongs the service life of refrigeration equipment and its maintenance because it reduces ice formation.



Improves maintenance of high-speed rolling door due to ice damage.

## Security and accessibility



Reduction of accidents caused by ice on the floor between the pre-chamber and the cold room.



Avoid collisions due to improved visibility by eliminating fog around the door.



Improves accessibility and visibility because no plastic strip door is needed.

## Preservation



Correct conservation of frozen products thanks to the stabilization of temperatures in the cold room, avoiding sudden changes in temperature.



Consult complete catalogue  
"Air curtains for cold stores"



### KOOL / KOOL BB

Air curtain with high-speed air jet specially designed for climate separation in medium cold store doors.



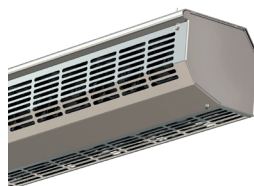
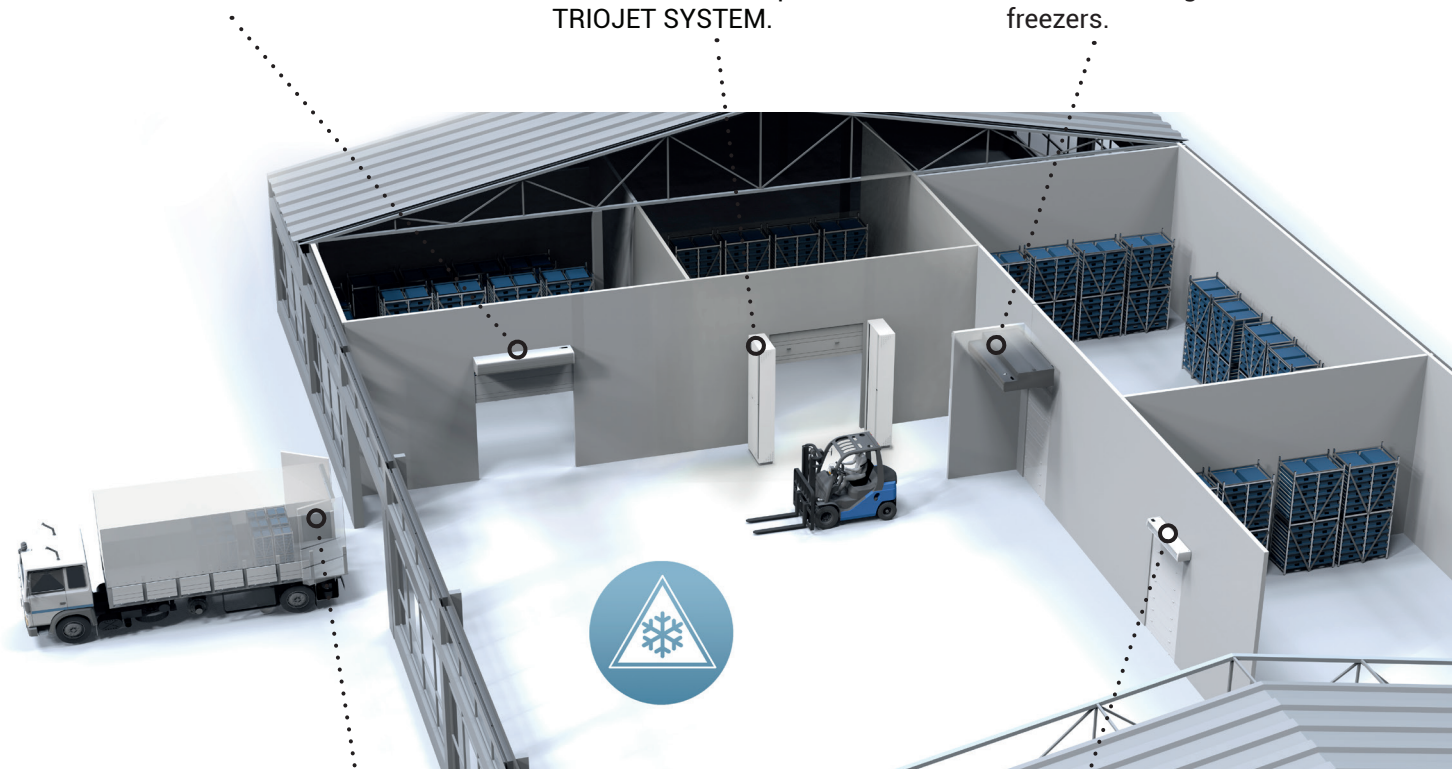
### TWIN KOOL / KPL

Double jet solution that generates a separation zone at the door. Ideal for freezers where there is no space for the TRIOJET SYSTEM.



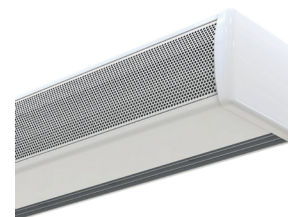
### TRIOJET SYSTEM

High efficiency air curtains system with triple jet specially designed to be installed on large industrial freezers.



### AIRTRACK

Air curtains for refrigerated vehicles doors.



### OPTIMA K

Small compact model recommended for small cold store doors.